

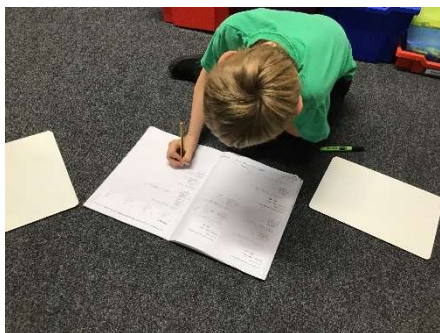
5<sup>th</sup> November 2021



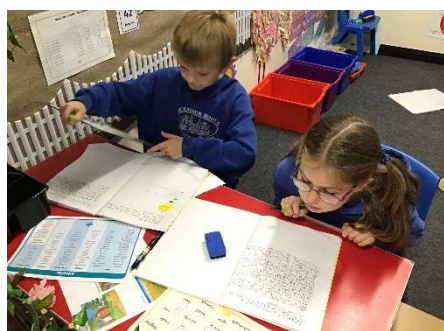
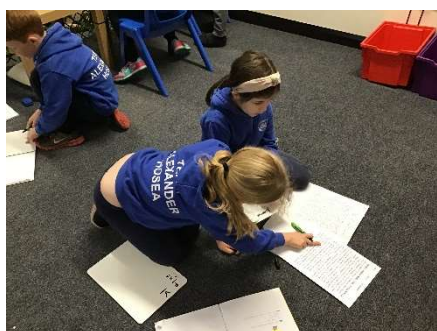
# Ruby Class Newsletter

Welcome back to Term 2!

In maths, we have moved on to column subtraction. Again we have added in the element of borrowing 10/100. We've been really impressed with how the children have picked this new skill up. We have also moved on to estimating a calculation.



In English, we have become authors! The children are adding an extra chapter to *George's Marvellous Medicine* - 'Marvellous Medicine Number Five'. They have thought about the setting, a new character and the plot. We hope to start writing this next week.



We have started a **DT** project. The children are going to design and build a structure to carry an egg safely. This week we looked at the different types of marketing around egg boxes. **In PSHE**, the children were introduced to our new terms theme 'Celebrating Difference'. We talked about different types of families. **In PE**, we started our first lesson in gymnastics. We tried curling as small as we could and found different ways to travel. **In art**, the children have created a scrapbook page all about the illustrator Quentin Blake. **In RE**, the children have learnt about the festival of Diwali and the story of Rama and Sita.



## For your information

**PE** - will take place on Tuesday mornings and Wednesday afternoons. Please ensure your child is wearing a PE kit in school on these days - thank you.

5<sup>th</sup> November 2021

**Monday 8<sup>th</sup> November** - Rugby and Cheerleading - children to come in PE kit.

**Friday 3<sup>rd</sup> December** - Christmas Fair

**Friday 10<sup>th</sup> December 9.10am onwards** - Years 1-6 Singing performance

**Friday 10<sup>th</sup> and Thursday 16<sup>th</sup> December** - Children can wear Christmas Jumpers (£1 donation)

**Tuesday 14<sup>th</sup> December** - Year 3 - Ruby and Emerald Christmas Party - more details to follow.

**Tuesday 14<sup>th</sup> December** - Hopefully the Friends Christmas Disco.

**Spellings** - will be set on a Friday to be tested on the following Friday. Please support your child in practising these.

**Reading** - Please can we encourage you to read with your child (5 times a week) and sign/initial to say you have read with them.