

Newsletter 6 21 November 2025

For school calendar: <http://www.alexanderhoseaprimary.co.uk/calendar/?calid=1&pid=3&viewid=1>

Dear Parents/Carers

Consultation to join The Leaf Trust – The consultation window has now ended. Thank you so much to everyone who took the time to read the information sent out; attended the session for Parents/Carers and for taking the time to respond to the survey. The feedback has now been considered and a Consultation Report compiled. The link for this will be emailed to parents today. The due diligence process is going on at the moment and the next step is for our Governors to consider all the information and decide whether to proceed, then the Board of Trustees at The Leaf Trust will consider the information and decide whether to approve the school to join the trust. Following this, if both parties agree, an application will be submitted to DfE in Dec 2025/Jan 2026, with the intention to convert in September 2026.

Reception places for September 2026

If your child was born between 1 September 2021 and 31 August 2022, you must apply for them to start primary school in September 2026. This is a very important decision and it is important that you read the South Gloucestershire Primary school admission guide before you apply. Applications for primary school admission must be submitted no later than **15 January 2026**. <https://life.southglos.gov.uk/kb5/southglos/directory/advice.page?id=GLu6GUIMkpw&familychannel=2-2&channel=family> We host weekly tours throughout the autumn term and in January in the run up to the deadline. Spaces on these can be booked through the school office.

Consultation to apply to open a School-Based Nursery – The consultation window continues until 28th November. Thank you to everyone (including many prospective new parents), who has taken the time to respond to the survey. We have received a huge response to this already and there is a clear appetite for a pre-school in the village. Once the consultation closes, we will submit an application to open a nursery from September 2026. We will find out whether we have been successful in March 2026.

Best regards, Mrs Deb Williams

Dates for your diary

Week 4

24th Nov – INSET day – school closed to pupils
25th Nov – Y3/4 tag rugby
26th Nov – Prospective parent tour for Reception '26
27th Nov – Prospective parent tour for Reception '26
28th Nov – INSET day – school closed to pupils

Week 5

2nd Dec – Prospective parent tour for Reception '26
3rd Dec – Friends of AHS Christmas gift shop
5th Dec – Christmas Fair 4-5pm
7th Dec – Cross country event

Week 6

8th Dec – Prospective parent tour for Reception '26
9th Dec – KS1 performance to parents 9:30am
9th Dec – Y3/4 performance to parents 2pm
10th Dec – Y1 trip to Bristol Aquarium
11th Dec – Y3/4 performance to parents 9:30am
11th Dec – KS1 performance to parents 2:30pm
12th Dec – Assessment reports to parents INSIGHT

INSET days for 2025-26

Week 7

15th Dec – Reception nativity to parents
15th Dec – Cup assembly
15th Dec – Y5/6 service at Holy Trinity Church 6pm
16th Dec – Y5/6 service at Holy Trinity Church 2pm
16th Dec – Friends of AHS discos Inf 4:15-5pm; Ks2 5:15-6:15pm
17th Dec – Christmas meal for children
17th Dec – Topaz party in pm
18th Dec – Y3/4 party in afternoon
19th Dec – Coffee and carols in hall from 9:15am
19th Dec – Y5/6 party pm
19th Dec – Last day of term

Term 3 – Week 1

5th Jan – INSET day

Please see teachers' weekly newsletters for more information about specific class activities.

This term's Value



Statutory Spelling Lists

Parent Council requested that we share the statutory spelling lists for Y1/2 Y3/4 Y5/6. These are part of the document below.

https://assets.publishing.service.gov.uk/media/5a7ccc06ed915d63cc65ce61/English_Appendix_1_-_Spelling.pdf

We follow the Essential Spelling scheme. This starts in spring in Year 2 and continues until the end of Y6. Year 2 have daily sessions, once the full phonics scheme has concluded. Following on from this, each class in ks2 teach a discrete spelling session each week.

Teacher contact

All emails should be sent to the school inbox AlexanderHoseaPrimary@sgmail.org.uk This will ensure your email is seen quickly and will be passed to the relevant members of staff. Please ensure any emails have the child's name and class information.



Special menus

2nd December – English breakfast day, sausage / veggie sausage with baked omelette, hash brown and baked beans

17th December – Christmas Lunch, traditional lunch or Quorn fillets

25th March – Year 2 / Jet class parent lunch

17th July – Year 6 / Amethyst class parent leavers lunch

Maths Parent Workshop

As discussed at Parent Council, there will be a parent workshop in spring 2026. This will be hosted by a Maths Advisor from South Glos Council. She has a wealth of knowledge and will be able to provide helpful hints and tips for parents to support their children at home.

On the subject of Maths, please find below the link to our current Calculation Policy on our website.

https://www.alexanderhoseaprimary.co.uk/_site/data/files/doc/DC2B5E0034E6DCD4263B3373D3BF0B76.pdf

Project Overviews

Each term, our wonderful Teachers plan inspiring and rich projects to link together aspects of the year group's learning in meaningful ways. Each term, we share Project Overviews via the Pupils as well as the Curriculum tabs on the school website. Please find the links to these below.

Year 1 – https://www.alexanderhoseaprimary.co.uk/_site/data/files/doc/ruby/83D8E584B9B07CC91DA8C1FAF9DFCCCD.pdf

Year 2 - https://www.alexanderhoseaprimary.co.uk/_site/data/files/doc/jet/termly%20overviews/4EA9CA994425F34A942A20B103E295B7.pdf

Year 3

https://www.alexanderhoseaprimary.co.uk/_site/data/files/doc/crystal/termly%20overviews/DB80CDD33C072B55F1173BAA02199056.pdf

Year 4

https://www.alexanderhoseaprimary.co.uk/_site/data/files/doc/diamond/termly%20overviews/5883B2C9D87FE129F6E62D7C7DDE10A3.pdf

Year 5 https://www.alexanderhoseaprimary.co.uk/_site/data/files/doc/pearl/termly%20overviews/F8E8F8F0EE9C809FBD184AFACD22A973.pdf

Year 6

https://www.alexanderhoseaprimary.co.uk/_site/data/files/doc/amethyst/termly%20overviews/0827544FFA148797F6BAC7D42D55A296.pdf

The next Project Overviews for the spring term projects will be published on the school website in January.

Name all items, please

We are experiencing a spike in unnamed lost property at the moment. Please do name clearly items (including jumpers/cardigans, coats, hats, gloves, scarves etc). If the item is named we can return it to your child.

If you have adopted uniform from other families, please cross out the previous owner's name, so that it doesn't keep bouncing back to them.

If you need to purchase labels please consider ordering from MyNameTags, using the link below as they donate monies back to the Friends.

<https://www.mynametags.com/affiliate?id=29328>

Thank you

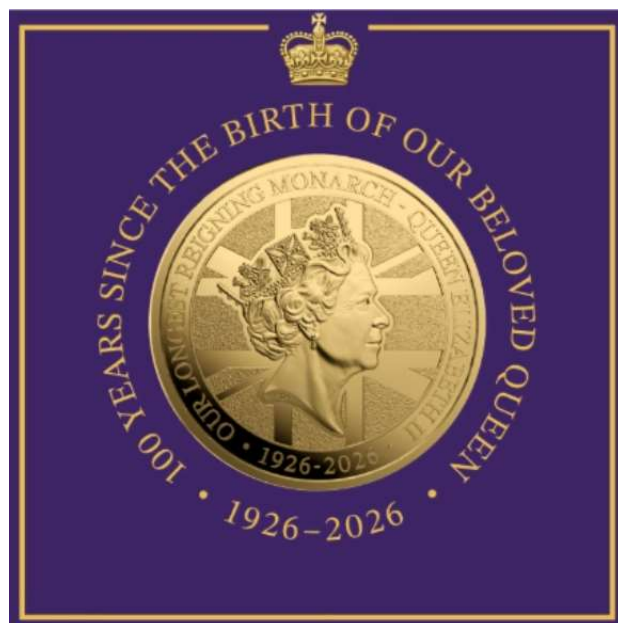
Chairs

We have just purchased new chairs for the hall ready for the Christmas performances.

The Queen Elizabeth II Centenary commemorative school medal

We have been given the opportunity by Tower Mint for parents to purchase the office Queen Elizabeth II centenary commemorative school medal. The medals are £3.50 each, the minimum order is 50. Please complete the form below if you would like a medal. IF we receive enough interest payments will be added to Scopyay.

[The Queen Elizabeth II centenary commemorative school medal – Fill in form](#)



Free school meals

You could be one of thousands of families across South Gloucestershire missing out on saving over £400 each year, per child.

Your child will get a hot, healthy, freshly prepared meal at lunchtime. Their school will have full menu details including dietary requirements.

All children in Reception, Year 1 or Year 2 get universal infant free school meals so you do not need to apply for them.

However, you need to apply to receive benefits-related free school meals and the extra help they offer, including funded holiday club places in the main school holidays and help towards school uniform and school trips.

Plus, you'll be helping your child's school - they will receive extra funding to improve educational outcomes.

The quickest way to apply is to fill in a free school meal application online.

www.southglos.gov.uk/freeschoolmeals

Christmas Play Donations

As requested through parents & grandparents in previous years, there will be donation pots at the end of the Christmas performances, should anyone wish to donate to the children's classes.

The monies will be split between the classes doing the performances.





Friends of Alexander Hosea

Lots of exciting Christmas events happening in December 🎄

Christmas Fair 🎅 🎄

Thank you to those who have volunteered so far! We cannot run these events without much needed volunteers. Please do help if you can we would really appreciate it. (Link below)

Pre booking for certain items will be available on ScoPay including items children have worked very hard on making to be collected at the fair.

<https://volunteersignup.org/DXMCT>

Winter Disco pre booking available - with a special winter treat! ❄️

<https://www.pta-events.co.uk/friendsofahs/index.cfm?event=event&eventId=105568>

🕒 The annual Christmas Coffee & Carols is scheduled for the last day of term.

Please bring in raffle donation prizes and cake donations so we can raise lots of funds for our children.

We also need volunteers on the day to help us run the refreshments and raffle. Please do get in touch if you can help.

Events we are hoping to organise – please contact a committee member if you can help

- Colour run
- Grow a £
- Summer fair
- Ice cream sales

Upcoming events

- 3rd December – The return of The Elf Christmas shop – pre booking deadline is 14th November!
- 5th December – Christmas Fair
- 16th December – Winter disco – KS1 4.15-5pm KS2 5.15pm-6.15pm – pre booking available
- 19th December – Coffee & Carol morning – please bring donations for the raffle to the main office

A reminder of who the Friends are:

Co-Chairs: Alice (year 1 & year 4 parent) & Shelley (year 2 & year 4 parent)

Treasurer: Gemma (year 2 parent)

Co-Secretary: Tara (year 2 & year 4 parent – School's SBM) & Becci (year 2 & year 4 parent)

Parent liaison for Friends

Topaz – Kelly (Theo's mum)

Ruby – Becky (Esme's mum)

Jet – Becci S (Alfred's mum)

Crystal – Annette (Mia's mum)

Diamond – Becci S (Hugo D's mum)

Pearl – Sarah (Rocco's mum) Amee (Neeva's mum)

Amethyst – Gemma (Max's mum)