



## Maths

### Measurement – weight Kg/g

Find a recipe that uses Autumnal seasonal fruits or vegetables.

Ask an adult to help you make it.

Document how you have made it through photographs and brief instructions and remember to focus on the maths learning.

Extension: What would the measurements be if you had to half or double the recipe?

Why make a difference?



## English

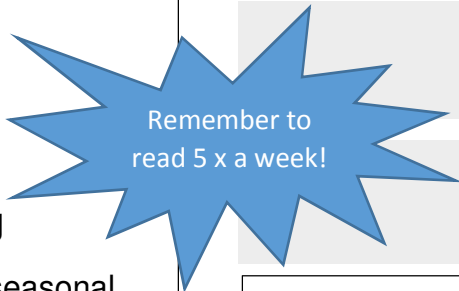
Read the poem "Trees" by Harry Behn

Write it out in your best joined handwriting and design and decorate a border around it too.

Practise reciting the poem starting with at least the first 2 verses using expression.

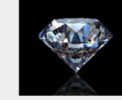
You will be asked to perform this to the class.

Extension - You could write one of your own



# Home Learning Grid 1

## Diamond Class



Term 1 – home learning due on **Friday 19<sup>th</sup> October -3-3.30pm –Parents welcome**



### Science and Technology

Research the life cycles of different trees that grow in the UK.

Choose one and make a poster that explains each stage of the cycle – remember to use scientific language and draw like a scientist!



### The Arts Art & Music

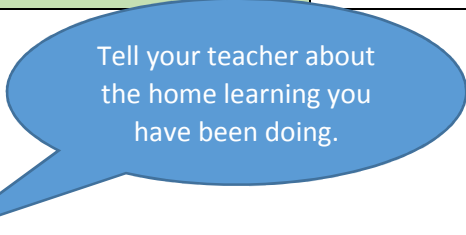
Use your sketching and painting skills to make a collection of British woodland animals.







### The World RE, PHSE, PE and French

PHSE What can we discover about you?

In a box/bag, put a collection of objects together that are special to you and that will help us discover more about you. Attach labels to each of the objects with a brief explanation of why you have made your choices.



-  **Ruby** – being aware of others and how what you do or say, might make them feel
-  **Emerald** – bouncing back from mistakes and disappointment, and controlling your anger if it tries to get out!
-  **Sapphire** – keeping focused and staying in control of the monster distractions
-  **Diamond** – being able to notice a problem and thinking of ways to

