
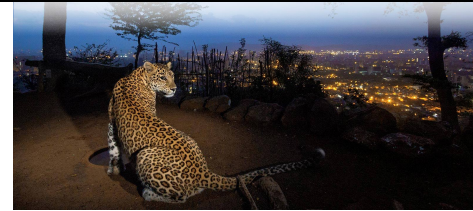


Alexander Hosea Curriculum Map – Year 2

Subject: Geography linked to ‘Tales from far off places’


<p>Sticky knowledge:</p> <ul style="list-style-type: none"> • The United Kingdom is in Europe. • India is in Asia. • Europe and Asia are continents. • The UK and India are countries. • The UK and India are made up of villages, towns and cities. • India is much larger than the UK. • India and the UK have different climates and seasonal weather patterns. • Mumbai was originally called Bombay. 	<p>Physical Geographical features of Mumbai</p> <ul style="list-style-type: none"> • Mumbai has many tourist attractions, like Gilbert Hill and Bollywood Studios. • The climate in Mumbai is usually hot and humid but there is a significant amount of rainfall during the year. There is a wet and dry season. • Mumbai was originally seven islands but then the shallows were filled in to connect the islands. • Mumbai has three hill ranges. • There is a national park in Mumbai which is best known for its leopards and Bengal tigers. Bengal tigers are endangered animals and there are only about 2,000 left in the world. 	<p>Programme of Study statements for the end of KS1:</p> <ul style="list-style-type: none"> • use world maps, atlases and globes to identify the United Kingdom and its countries, as well as the countries, continents and oceans studied at this key stage • understand geographical similarities and differences through studying the human and physical geography of a small area of the United Kingdom, and of a small area in a contrasting non-European country 					
<p>Human Geographical features of Mumbai</p> <ul style="list-style-type: none"> • Mumbai is India’s most populated city. About 13 million people live there. • Mumbai is located on the west coast of India. • There are more than 200 skyscrapers, which are very tall buildings. Thousands of others are being built. • Mumbai has one of the largest slum areas in the world (Dharavi). • Mumbai has many tourist attractions. These include the Mumbai Devi temple and the Mumbai sealink. • Mumbai also has many ports, museums, shopping malls, offices and supermarkets. • Know where the nearest ports, museums, shopping malls , offices and supermarkets are to Wickwar • There is also a train station, a harbour and an airport. • Know where the nearest airport, harbour and train station are to Wickwar • Many tourists visit Mumbai. There are lots of hotels for them to stay in. 		<p>Future Knowledge:</p> <p>Ports and rivers Y3 Study of Europe and Greece Y3 Egypt Y4 Mayans Y5</p>					
<p>Key Vocabulary :</p>		<p>Previous Knowledge:</p> <ul style="list-style-type: none"> • The names of the four countries and capital cities of the UK. • Know that Wickwar is a village, and there are local towns and cities • The geography of our school and the key human and physical features of Wickwar • Where to find the hot and cold places of our world in relation to the North and South Poles and the Equator. • That the weather and weather patterns in the UK are seasonal. (Y1) • Names of the continents and oceans (term 3) 					
<table border="0"> <tr> <td>airport</td> <td>a place where aeroplanes land and take off</td> </tr> <tr> <td>capital city</td> <td>the city where the government sits</td> </tr> <tr> <td>city</td> <td>a large town, like Leeds</td> </tr> </table>	airport	a place where aeroplanes land and take off	capital city	the city where the government sits	city	a large town, like Leeds	
airport	a place where aeroplanes land and take off						
capital city	the city where the government sits						
city	a large town, like Leeds						

climate	weather that is typical of a place
continent	a very large area of land that consists of many countries. Europe is a continent
country	an area of land that is controlled by its own government
harbour	a place on the coast where ships moor to shelter
hill	a naturally raised area of land lower than a mountain
hotel	a place that provide guests with somewhere to eat and sleep
house	a dwelling, place to live for people
human features	features of land that have been impacted by human activity
humid	a climate that is very hot and damp
landscape	everything you can see when you look across an area of land including hills, rivers, buildings, trees and plants
office	a room where business and work takes place
physical features	natural features of land
rainfall	the amount of rain that falls in a given time period
seasons	main periods of the year that can have their own weather conditions
sky scraper	a very tall building with many floors
temperature	a measure of how hot or cold something is
tourist	a person who visits a place for leisure, interest or pleasure
town	a large group of houses, shops and buildings where people live and work. Towns are larger than villages but smaller than cities.
train station	a place on a railway line where trains stop to allow people to get on and off
vegetation	plants, trees and flowers
village	a small group of houses, perhaps with a few shops
weather	the condition of the atmosphere at a given time



Cultural Capital

 **Thinking like a Geographer**

maps	Enquiry	communication
Use globes and atlases to locate India and Mumbai within India Use maps and globes to see what places are nearby. Are there any coasts etc.?	<ul style="list-style-type: none"> • Research features of Wickwar and Mumbai using information books and on-line searches and identify similarities and differences. • Support to ask and answer question like. 'What is this place like? (human/ physical features) How would I get there? How is it similar and different from here? 	Explain what Mumbai is like using geographical language
Visits and visitors: See project overview	Experiences and events Link with a school in Mumbai?	Key texts 
Community events and links:	Global issues Housing	Famous people: See project overview
Life Skills	Key places	

--	--	--