



## Alexander Hosea Primary School 'Roots to grow, wings to fly'

Honeyborne Way, Wickwar, South Gloucestershire, GL12 8PF  
Tel: 01454 294239 or 01454 294638  
Email: AlexanderHoseaPrimary@sgmail.org.uk  
www.alexanderhoseaprimary.co.uk  
Headteacher: Mrs D Williams



### Newsletter 14, 27<sup>th</sup> March 2020

For school calendar: <http://www.alexanderhoseaprimary.co.uk/calendar/?calid=1&pid=3&viewid=1>

From Mrs Williams:

It was sobering to look back to my last newsletter and realise how quickly the situation has changed for us all. Thank you so much to you all for your support and bearing with us as we worked hard to keep on top of the daily updates from the Government and keep you all informed in the last week of school.

As you will be aware, school is closed aside from our provision for a small handful of key workers' children. During their time in school, they are also working through the home learning grids sent home by teachers. Children must not be sent in if anyone in their household has symptoms (high temperature or persistent cough), when all family members should self-isolate for 14 days.

Teachers will continue to email weekly home learning grids in preparation for the new week at home, until they completely migrate to Google Classroom (see below). They have been enjoying the messages and photos from children about their learning. Whilst our staff are protecting themselves and their loved ones by staying home, they are still keen to keep in touch and can offer any support and guidance you may need. A member of the Senior Leadership Team (Mrs Moncrieff, Mrs Windmill or myself) will continue to send fortnightly newsletters.

\*\*\*\*\***Please stay safe and stay at home!**\*\*\*\*\*

Some key dates for your diary:

**INSET days** – Friday 3<sup>rd</sup> July. (We will be plan our dates for the next academic year soon).

We do not yet know when we return to school, but are anticipating not for many weeks.

#### Integra Home Learning Resources

We are really pleased to be able to inform you that Integra, on behalf of Education Learning and Skills have produced a number of home learning resources. These links can provide resources to use alongside other resources and materials that teachers will send out on their weekly home learning lists. The other resource that is available is through the South Glos. Parents and Carers forum, who also have a range of resources and links that may be helpful.

We hope you find the resources really useful. Content will be added to the Integra page over time as the Integra team are working on adding further resource and materials.

#### The links are as follows:

This first page includes links to both the Integra site and Parent/Carer Forum site which can be found on the Council website:

<https://find-information-for-adults-children-families.southglos.gov.uk/kb5/southglos/directory/advice.page?id=JyM23zPICBc&familychannel=2-4&channel=family>

The individual links are:

<https://www.integra.co.uk/home-learning/>

<https://www.sglospc.org.uk/resources>

# Friends of AHS

~~28<sup>th</sup> Apr 6:30pm~~ — ~~Friends Meeting at School — All Welcome!~~

~~19<sup>th</sup> May~~ — ~~Sports Day Refreshments~~

~~1<sup>st</sup> June~~ — ~~100 Club Draw~~

**School Librarians:** The Friends are working to make sure our library has the best books available to the children, but more librarians are needed to ensure it is used to its full potential! If you can spare an hour or so during the school day please send us a Facebook message, email (see below) or contact [Esra.KorogluWard@sgmail.org.uk](mailto:Esra.KorogluWard@sgmail.org.uk) . Thank you.

**What's happening?** Things may be a little quiet at the moment but rest assured we are starting to plan some fantastic fun events when school re-opens! If you feel you'd like to help in some way but don't really want to join the committee, have a look at our "Friends of AHS Community" group on Facebook.

**Don't forget to keep an eye on our Facebook page for all our news and upcoming events (as and when we can)!**

[friendsofahs@hotmail.com](mailto:friendsofahs@hotmail.com) [facebook.com/FriendsOfAHS](https://facebook.com/FriendsOfAHS) School website: 'Parents' section

## Easter Competition

We would like to invite all children to take part in an Easter competition to design and make either (a) Easter miniature garden; (b) egg carrying vehicle or (c) Easter bonnet or decoration. Please submit photos of your entries to your teachers via Google Classroom (or 2Simple for Reception) by Thursday 2<sup>nd</sup> April. Get creative!

## Communication

To keep our office staff safe, they will be working at home every day. School emails will be picked up by Mrs McNeill on a Monday morning and Mrs Hall on Tues, Weds and Fri. Senior Leaders (Mrs Williams, Mrs Moncrieff and Mrs Windmill) and Teachers will also pick up their emails on a regular basis.

If you have booked a place during the partial opening period and you are able to keep you child at home instead, please email the school office, but also copy in [Debbie.Williams@sgmail.org.uk](mailto:Debbie.Williams@sgmail.org.uk) and [Angela.Moncrieff@sgmail.org.uk](mailto:Angela.Moncrieff@sgmail.org.uk) , so that we know who to expect each day.

Unless they are unwell or on annual leave, teachers will check their emails regularly and respond as soon as they can.

[Sally.Windmill@sgmail.org.uk](mailto:Sally.Windmill@sgmail.org.uk)

[Helen.Tyler@sgmail.org.uk](mailto:Helen.Tyler@sgmail.org.uk)

[Laura.Cleverley@sgmail.org.uk](mailto:Laura.Cleverley@sgmail.org.uk)

[Rebecca.Rehman@sgmail.org.uk](mailto:Rebecca.Rehman@sgmail.org.uk)

[Sarah.Wigginton@sgmail.org.uk](mailto:Sarah.Wigginton@sgmail.org.uk)

[Amy.Arrowsmith@sgmail.org.uk](mailto:Amy.Arrowsmith@sgmail.org.uk)

[Kimberley.Edgar@sgmail.org.uk](mailto:Kimberley.Edgar@sgmail.org.uk)

[Heidi.Brooks@sgmail.org.uk](mailto:Heidi.Brooks@sgmail.org.uk)



To protect our staff and their families, there will be a skeleton staff on site each day to maintain safe working practices. Everyone else will be working at home.

## Handwashing

Please continue to reinforce good hand hygiene at home so that children can keep safe. This is especially important before eating and when returning to the home (eg after daily exercise).

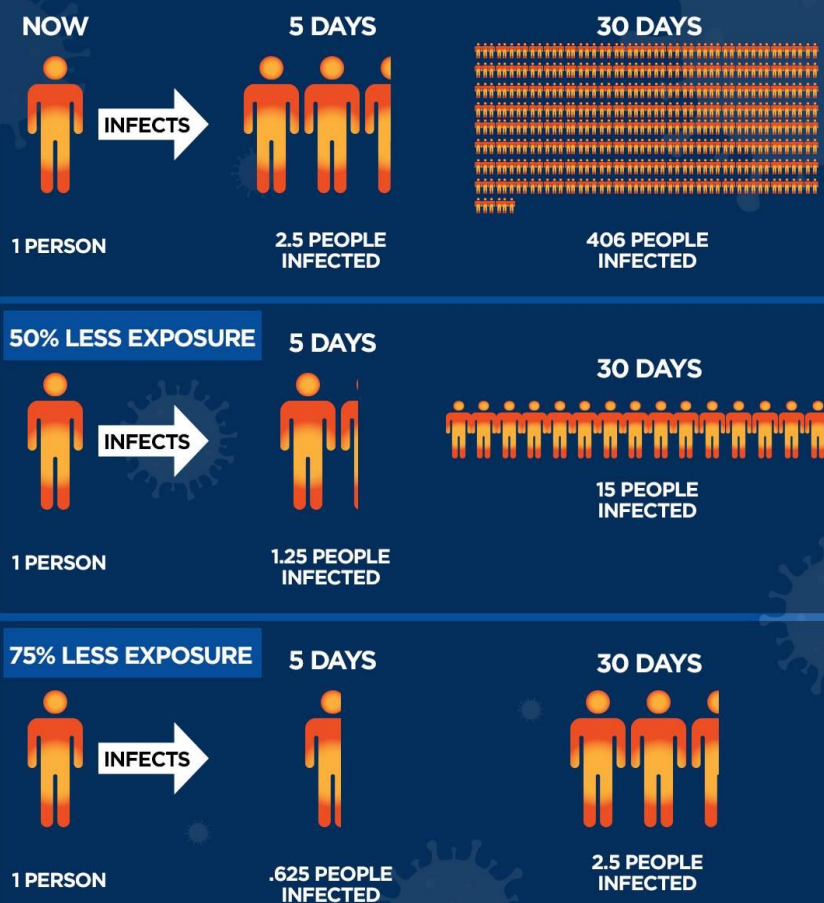


## School Events

As schools are closed for the foreseeable future, all event for the remainder of the year have been cancelled.

When we come back to school, our main priority will be to support the wellbeing of children and help them to re-establish school routines, so future events will be considered in the weeks after our return to school.

## The Math Behind Social Distancing



Credit:  
Robert A.J. Signer Ph.D.,  
Assistant professor of Medicine at the University of California, San Diego  
Gary Warshaw, Art Director

©Global News

### Stay at Home Guidance

If anyone in your household develops symptoms for Coronavirus, please follow the guidance on the link below:

<https://www.gov.uk/government/publications/covid-19-stay-at-home-guidance/stay-at-home-guidance-for-households-with-possible-coronavirus-covid-19-infection>

Updated 24<sup>th</sup> March 2020

### Child-friendly presentation about Coronavirus

If you are looking for a child-friendly way to talk to your child about Coronavirus, you may wish to use the presentation below:

[https://adcs.org.uk/assets/documentation/Child\\_Friendly\\_Explanation\\_of\\_Coronavirus.pdf](https://adcs.org.uk/assets/documentation/Child_Friendly_Explanation_of_Coronavirus.pdf)

### Google Classroom

We are grateful to Mr and Mrs Rehman for working hard behind the scenes to set up Google Classroom for all teachers (Y1-6) to use to keep in contact with their classes. We hope that this will support two-way communication with families around learning. All teachers should be in the position to start to roll this out for next week's learning opportunities. A few classes have already begun to try this system out. You will have received an email direct from your class teacher about how to access this. Reception are continuing to use 2Simple to communicate.

We look forward to seeing this in action to support families for the period of school closures.

Once you have signed in and opened Google Classroom, please make sure that you select "I'm a student" when prompted.

You will be able to use this platform, to upload any of your child's learning that they would like to share with the class teacher, but ensure that you attach it to the assignment link. Most of the home learning, we have set has also been set on Google Classroom as an assignment, so please add a photo of the learning to the correct assignment.

Your class teacher would value your feedback about how this is working for you.