



Alexander Hosea Primary School 'Roots to grow, wings to fly'

Honeyborne Way, Wickwar, South Gloucestershire, GL12 8PF
Tel: 01454 294239 or 01454 294638
Email: AlexanderHoseaPrimary@sgmail.org.uk
www.alexanderhoseaprimary.co.uk
Headteacher: Mrs D Williams



Newsletter 19, 19th June 2020

For school calendar: <http://www.alexanderhoseaprimary.co.uk/calendar/?calid=1&pid=3&viewid=1>

From Mrs Williams:

I hope that everyone is safe and well. We know that there are a number of families who are still shielding and I hope that the transition from this arrangement goes smoothly for you from start of July.

As more businesses get ready to reopen after 3 months and people return to work, we have seen a much higher demand for key worker's places. We are full in both original Sapphire groups (A & B) and we are getting ready to open up a third key worker bubble (Sapphire C) to accommodate the additional children (including everyone on the current waiting lists). We are really pleased to be able to offer this without the need to close Reception or Year 6 bubbles at this time, but we have alerted Reception parents that if the need continues to rise (as we have seen this week), then we may need to close Reception later in the term to accommodate more key worker's children.

We know that we have a great many key worker families in our school community and not all families need the provision at school. We have been told by Government that we must do our very best to accommodate all the key worker's children that we can.

Key worker groups are in school 5 days a week and Reception and Year 6 are in school from Monday to Thursday to allow for cleaning and Teacher's planning and preparation time. All Teachers will be back on site (health permitting) from the w/c 29th June. All staff are allocated to the provision of children in school and with the opening of an additional bubble, the time the teachers have available to keep in touch with families via Google Classroom will decrease. Despite this, you should still be able to expect that the Teacher and/or Class Teaching Assistant will engage with you to respond to learning on Google Classroom on a regular basis (at least once a week).

Term 6 will end for Reception and Year 6 on Thursday 16th July and key workers can access provision until Friday 17th July. We will be using the 20th July as a transition day for teachers to pass on information about their outgoing classes and receive information about their new classes. This normally happens in our July INSET day each year, but we will be remaining open to key workers on 3rd July instead. For staff there will also be a lot of preparation needed to get the school autumn term ready. We do not yet know what provision will look like in September, but we hope that the Government will give guidance really soon so that we can inform you and plan for it!

Teacher Allocation for September 2020

We do not yet know what provision will look like, but we have allocated teachers to a class in the hope that we may be able to provide for children in bigger numbers (if not all of them) from day 1 on Wednesday 2nd September.

Reception (Topaz)	Mrs Windmill
Year 1 (Emerald)	Miss Tyler
Year 2 – previous Jet Class (Jet)	Mrs Rehman and Mrs Cleverley
Year 2 - previous Emerald Class (Ruby)	Mrs Wigginton
Year 3 (Crystal)	Mrs Arrowsmith
Year 4 (Diamond)	Mrs Moncrieff
Year 5 (Pearl)	Miss Edgar
Year 6 (Amethyst)	Mrs Brooks



Wonderful Staff!

I am so grateful to our wonderful staff, who have been working tirelessly on and off site to keep the school running smoothly and safely for the children on site and to engage with our families with children, who are not yet back at school.

Alongside their significant work commitments they, like many others in our society, have their own health to consider; family members to protect and support (including those who are unwell or elderly); children to home-school, amongst other things. Despite their multiple priorities, they have remained professional and continued to show care and attention to the children we serve and our colleagues. When a potential obstacle has needed to be overcome (eg recently trying to accommodate more key workers without closing Reception), staff have been flexible and solution-focussed to do what is best for the children. I am so grateful to them all.

Safeguarding

If you are concerned about the safety of a child, please alert the school's Designated Safeguarding Leads: Mrs Deb Williams, Mrs Angela Moncrieff or Mrs Sally Windmill. You can also contact Access and Response to make a referral to social care on 01454 866000 Accessandresponse@southglos.gov.uk

Safe drop offs and pick ups

- To avoid congestion around the site, it is really important that children are dropped off and picked up on time, using the one-way system.
- Please avoid arriving too early or too late. If you arrive after your bubble's entrance is closed, please contact the school office and wait (away from other arrivals) until an adult from your child's bubble can come to collect (this may take some minutes as they will be supervising hand washing).
- Can we also ask that only one adult picks up the child and that parents do not linger around the front of the site, as it clogs up access for the next group and makes social distancing more difficult.
- Be patient, be kind and considerate to other parents, children and staff.



Drop off and collection times

Bubble	Drop off	Pick up	Where?
Sapphire A	8:50am	3pm	Front office
Sapphire B	8:50am	3pm	Main playground gate
Sapphire C – from 29 th June	8:50am	3:10pm	Red gate (near car park)
Topaz	9am	2:40pm	Red gate (near car park)
Gold	9:15am	2:50pm	Red gate (near car park)
Amethyst A	9am	12:20pm	Main playground gate
Amethyst B	9:15am	12:30pm	Front office

It is really important that children are picked up and collected promptly. Please line up at your allocated space and the time given (not too early, as another group might be using the same gate/door). If you are late because of an emergency, let the office know you have arrived. You may have to wait a few minutes until a member of staff from the bubble can come up to the office to collect.

If your child is going to be absent for the day, then please let us know (with a clear reason for absence for our records).

Reports

The finishing touches are being put on reports in the next few days and we will start sending them home this week.

Y6, Reception and Key workers children will bring their reports (and their siblings) home with them in physical form. Whilst we wash our hands regularly, we would advise that parents wash their hands after holding the report and envelope.

For children not on site, we will deliver on foot or through the post.

If you would like to send feedback, please email the class teacher directly.

BACK TO SCHOOL 2020

Buying Your Uniform

Advice from your uniform supplier
for the coming summer

We face a potentially difficult summer with delays or interruptions to normal deliveries of uniform. To give us the best chance of supplying all your uniform requirements can we please ask:

1. **Order early**
2. **Order online**
3. **Make any exchanges/returns when our shops re-open**

We don't yet know how or when the current restrictions will be lifted but until then we will operate our normal full online service

Visit www.initiallyyours.co.uk

Choose your school from the dropdown menu

Please order as soon as possible

Initially Yours
GREAT CLOTHING PRINTED OR EMBROIDERED

Head Office: Waverley Units, Old Gloucester Road,
Hambrook, Bristol BS16 1RP
Call: 0117 9560909 Email: info@initiallyyours.co.uk

We are delighted to announce that **Initially Yours** branches are now fully re-opened, our staff are all back at work and looking forward to helping parents with their purchases of uniform as the summer progresses. Our opening times are exactly the same and can be found online.

Also online is our handy **Measuring/Size Guide** which will help parents order the correct size garment.

The way we will operate this year has changed. Our previous fliers have outlined this in detail. In addition:

1. Our staff regularly clean counters and equipment that may be common to both customers and themselves (eg credit card machines)
2. We have installed "sneeze screens" to protect our customers and staff at all counters
3. Branches have separate Click & Collect and Returns/Exchanges counters to help us serve you more efficiently and speedily
4. Returned garments are quarantined for 3 days before being returned to stock



Good news! I am so impressed by how many children are still working hard on TTRS and we now have 22 children who are Rock Heroes (Less than a second a question!), 42 Rock Legends, 24 Rock Stars. That means that 88 children in total can answer questions in less than 3 seconds or quicker. Keep up the good work!

Mrs Brooks – Maths leader

INSET Dates for next year

We have now booked our 5 INSET dates for 2020-21. Where possible we try to tag INSET days onto the start or end of a holiday to make it more convenient for working parents.

Tuesday 1st September

Friday 18th December

Monday 22nd February

Thursday 1st April

Friday 25th June

Video Learning

Some parents have asked for online video learning for KS2 children, who are not yet able to come into school.

Whilst our Teachers are not able to offer this, there are several pre-recorded online learning resources that parents might find helpful.

Oak Academy: www.thenational.academy

www.bbc.co.uk/bitesize

Both of these platforms provide FREE high-quality video lessons, tailored to national expectations.

Term dates:

2020/21

Term	Starts	Ends
Term 1	Tuesday 1 September 2020	Friday 23 October 2020
Term 2	Monday 2 November 2020	Friday 18 December 2020
Term 3	Monday 4 January 2021	Friday 12 February 2021
Term 4	Monday 22 February 2021	Thursday 1 April 2021
Term 5	Monday 19 April 2021	Friday 28 May 2021
Term 6	Monday 7 June 2021	Wednesday 21 July 2021

2021/22

Term	Starts	Ends
Term 1	Thursday 2 September 2021	Friday 22 October 2021
Term 2	Monday 1 November 2021	Friday 17 December 2021
Term 3	Tuesday 4 January 2022	Friday 18 February 2022
Term 4	Monday 28 February 2022	Friday 8 April 2022
Term 5	Monday 25 April 2022	Friday 27 May 2022
Term 6	Monday 6 June 2022	Friday 22 July 2022

Promoting good mental health

There are lots of resources available to support both your child and your wider family if you are finding things difficult at any time but especially in current situation. Please find some below.

YOUNGmINDS

<https://youngminds.org.uk/find-help/for-parents/supporting-your-child-during-the-coronavirus-pandemic/>

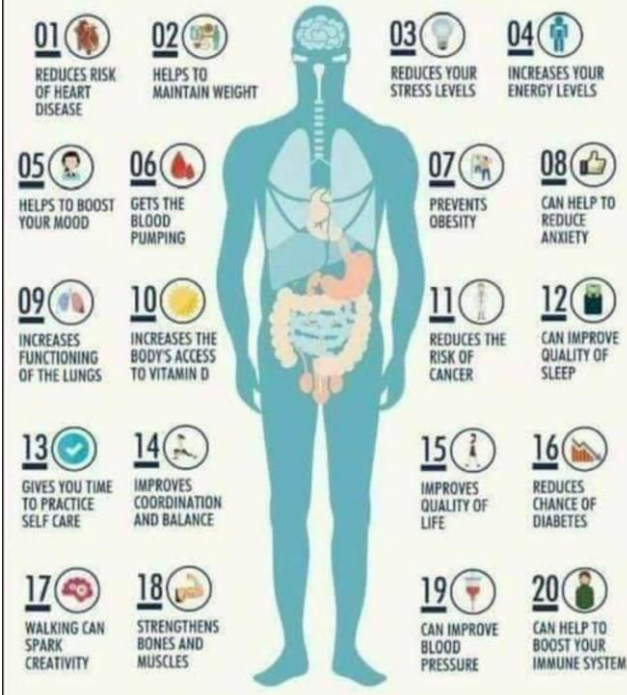
ONE YOU
SOUTH GLOUCESTERSHIRE

Social distancing and self-isolating is challenging for everyone, which is why it's so important for us to look after our mental health as well as our physical health at this time.

We have lots of advice and tips on how to maintain your mental wellbeing during this difficult time online, visit <https://oneyou.southglos.gov.uk/stress-less/>

Alternatively, if you would like to speak to someone to find out what support is available, call 0333 577 4666 available from 11am-7pm Monday to Friday, 12pm-6pm Saturday and Sunday or email communitysupport@southernbrooks.org.uk

20 BENEFITS OF WALKING 30 MINUTES A DAY



mindyou

Coronavirus (COVID-19): Useful information

This can be a very scary and confusing time for children and young people. However, there are lots of resources available online to help young people look after their mental health.

Please visit <http://sites.southglos.gov.uk/mind-you/coronavirus-covid-19-useful-information/>

Alternatively, if you need help and support or are worried about someone, advice is also available via Avon & Wiltshire Mental Health Partnership's 24-hour helpline, please call 0300 3031320.



School Packed Lunches – Term 6 only

Children may still bring their packed lunches from home, but the school kitchen is open to make school packed lunches if you would like them. Please book in the usual way using the online payment system. Children on site in Reception, Years 1 and 2 will get the meals for free (as usual) as well as KS2 children in receipt of free school meals.

Week 1 - 29th June, 13th July

Sandwich & Baguette Options	Monday	Tuesday	Wednesday	Thursday	Friday
Sandwich 1 Option	Cheese Sandwich	Cheese Baguettes	Cheese Sandwich	Cheese Baguettes	Cheese Sandwich
Sandwich 2 Option	Ham Sandwich	Ham Baguette	Ham Sandwich	Ham Baguette	Ham Sandwich
Sandwich 3 Option	Egg Mayo Sandwich	Tuna Mayo Baguette	Chicken Mayo Sandwich	Egg Mayo Baguette	School Choice
Veg	Veg Sticks	Veg Sticks	Veg Sticks	Veg Sticks	Veg Sticks
Fruit	Apple	Orange	Banana	Apple	Orange
Snack	Shortbread Finger	Cornflake Crispy Cakes	Lemon Drizzle cake	Cup Cake	School Choice
Dietary/Allergen Options available Gluten Free, Vegan, Dairy Free, Egg Free					
This menu is Subject to Change					

Week 2 - 6th July, 20th July

Sandwich & Baguette Options	Monday	Tuesday	Wednesday	Thursday	Friday
Sandwich 1 Option	Cheese Sandwich	Cheese Baguettes	Cheese Sandwich	Cheese Baguettes	Cheese Sandwich
Sandwich 2 Option	Ham Sandwich	Ham Baguette	Ham Sandwich	Ham Baguette	Ham Sandwich
Sandwich 3 Option	Egg Mayo Sandwich	Tuna Mayo Baguette	Chicken Mayo Sandwich	Egg Mayo Baguette	School Choice
Veg	Veg Sticks	Veg Sticks	Veg Sticks	Veg Sticks	Veg Sticks
Fruit	Apple	Orange	Banana	Apple	Orange
Snack	Flapjack	Oaty Cookie	Vanilla Bakewell Tart	Choco Crunch	School Choice
Dietary/Allergen Options available Gluten Free, Vegan, Dairy Free, Egg Free					
This menu is Subject to Change					

Families in receipt of free school meals, who are not on site, will continue to receive the food vouchers. Mrs Hall is organising these (Allison.Hall@sgmail.org.uk).